

OPE-5001

BALCONY SETS



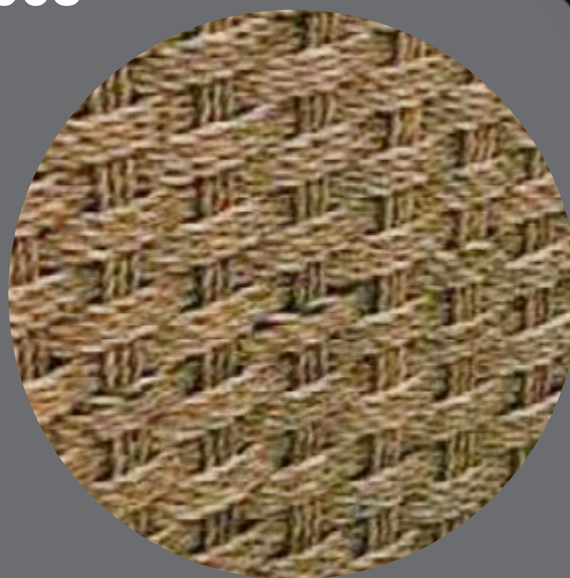
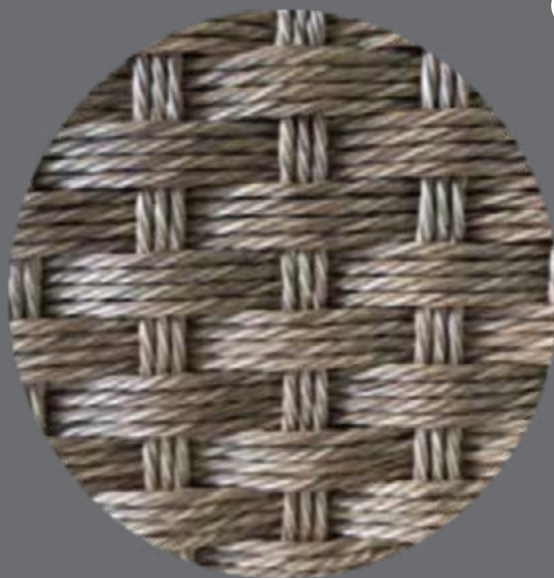
KEYWEST BISTRO SET

OPE5002





OPE-5003



NUM. 5004

HD SYNTHETIC RATTAN



OPE-5005



OPE-5006



OPE-5007



PALM BEACH SEATING

OPE-5008



OPE-5009



OPE-5010



PINECREST

OPE-5011



OPE-5012



OPE-5018

OPE-6001



OPE-5014



OPE-5016



OPE-5017



OPE-5013



OPE-5019



OPE-5020



OPE-5021



OPE-5022

NICEPATIO.COM

wel



Deep seating rocking chair set w/table

OPE-5023



OPE5024



POLYMER COMERCIAL GRADE JUMBO CHAIRS MADE WITH THE HIGHEST QUALITY MATERIALS



Seating with style...

Looking to arrange some seating area's that look cozy and elegant?

We have the answer with this Polymer set which is easy to assemble, lightweight and comfortable. Product comes in espresso and khaki; it is affordable and easy to ship!

Desea organizar algunas áreas de asientos que se vean acogedoras y elegantes?

Tenemos la respuesta con este juego de polímeros que es fácil de montar, liviano y cómodo. El producto viene en espresso, blanco y caqui.

ASSEMBLY REQUIRED

OPE5026





Polypropylene Chairs

Commercial Marine Grade Polymer

Have your restaurant or beach club look modern and sleek with our Marine Grade Polymer chairs.

- Durable
- Easy to Clean
- Lightweight
- Stackable and non-stackable depending on your need
- Comfortable
- Weight limit over 400lbs
- Quality & affordability



OPE007



Made with 100% welded aluminum these bar stools are elegant and durable. With HDPE rattan material that is dense and easy to maintain. This product comes in two sizes, bar height and counter height, ready to ship and needs no assembly. This barstool is commercial grade and has a non-slip rubber strap around the step to avoid injuries.

